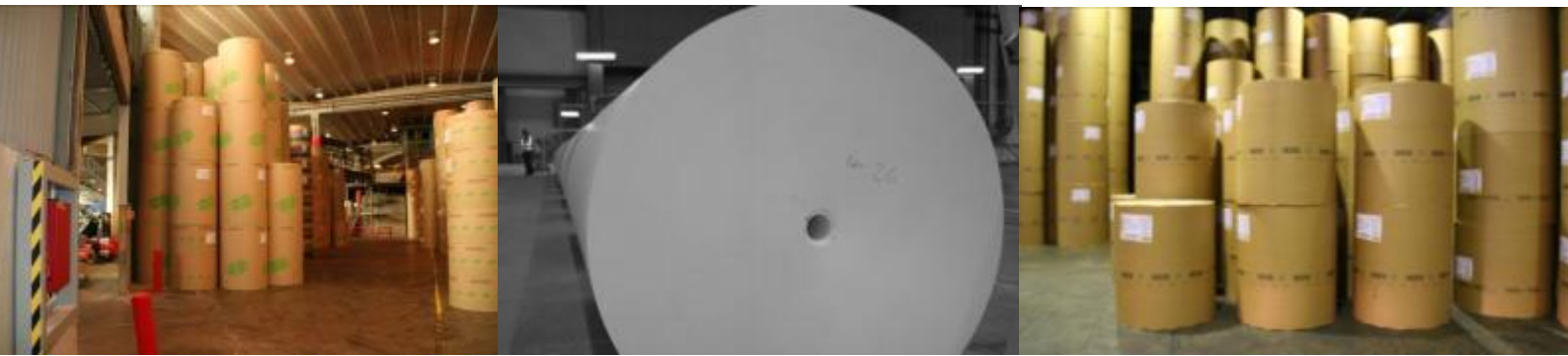




Production Management Software # 1 in the UK Newsprint Market



STRAQ Global

STRAQ Paper is the software to control, monitor and report on your key newsprint assets by capturing critical information and delivering proactive reporting. Years of print-industry process experience is at your fingertips to help you increase your operational efficiency.

Product overview

The key functionality of the STRAQ Paper solution adds value to your critical operations by:

- Providing inventory control & visibility on current stock levels on a per-site basis.
- ***NEW*** Keeping you informed of the self-defined events that matter such as excessive waste or production problems, whenever they occur, wherever you are via email and SMS*
(*SMS requires a gateway application)
- Logging and tracking your paper assets from the moment they enter the warehouse to the moment the printed papers leave.
- Providing you with a detailed Stock Summary overview of your paper assets, be it by weight, cost or reel count.
- Tracking reels used on jobs, by customer and edition, right down to machine level, with accurate usage and wastage statistics.

Providing operations-related reports for scheduling and improvement initiatives related to:

- Condition: Run-problem reports by Job or Edition, down to machine level.
- Wastage and damage per Job.
- Consumption: by Tonnage, Job, Edition, Supplier or paper type.
- Performance: Timings and per-job/edition performance for reporting to customers.

Providing key financial reports for management accounting:

- Profitability: by print job, by owner, edition or date, including ink and plates, where data is collected, for a TCO perspective.
- Wastage control: amount of cost and wastage, reason for wastage, returns, stock availability.
- Seamless automatic reporting to Head Office. All relevant site-entered data is securely transmitted to a central Head Office system (*using SSL where required) according to your schedule. Remote Head Office management personnel (i.e. personnel located in a site other than at the printing presses themselves) have immediate access to all reports, up-to-date print job information and all stock and usage data from each of the connected sites.

Key features include:

- Fully configurable to represent your specific infrastructure, and interface with your plant machinery*. (*Using our HTRAQ OEE System)
- Capture data either locally at print sites, or over the web using our hosted solution.
- Reduce both time spent and potential manual-entry errors by automatically logging EDI-based delivery information, while retaining the option to manually barcode-scan delivery contents into stock.
- Track paper and reel usage on jobs, including key metrics such as paper used, remaining, copies, print timings, damage and wastage.
- Provides a one-screen production schedule that includes recurring jobs (e.g. daily/weekly newsprint) on an interactive timeline.
- ***NEW*** Reconcile pending EDI deliveries against the actual delivery with the help of STRAQ Warehouse Assistant – a new delivery and stock-take scanning application that runs on a simple to use Windows Mobile scan gun.
- ***NEW*** Send print site deliveries, jobs, usage, waste details to multiple Head Offices based on user defined profiles – contract print sites can connect to multiple publisher's HO systems and send only the relevant information.
- ***NEW*** Receive SMS* and Email notification alerts based on criteria you define – job starts, excessive wastage, web breaks and more
- ***NEW*** Optimise the performance of your database with fully integrated backup & archival of old data.
- Extensive, quick reporting to local sites and Head Offices on all aspects of deliveries, stocks, usage, run problems and waste; comprehensive cost analyses.
- Head Office provides an aggregated, unique "group-wide" reporting platform from remote sites both domestically and internationally, and centralises data entry for third party printers deliveries, usage and wastage.
- Head Office "Virtual Stock" - accounts for paper not yet delivered to site, or delivered to a third party contractor site for your jobs.
- Full on-line user help – also available in multiple languages where required.
- ***NEW*** HTRAQ SCADA Trending to record and display the operational performance of your press equipment over time.
(*Using our HTRAQ OEE System).
- Stock Statistics report provides a comprehensive view of stock activity and quality over time – monitor the "flow and health" of your stock and determine the potential for improvement.
- ***NEW*** Multiple language / multiple currency support – one system for all your sites regardless of location!

STRAQ Global and the environment

With over 60% of the cost of producing a newspaper being the cost of the paper itself, STRAQ Paper is an invaluable tool in reducing cost, and benefits the environment as a result.

STRAQ Global's key focus is the newsprint industry

RFTRAQ's STRAQ Global executive management system manages over 55% of the newsprint production in the UK and is installed in over 70% of the UK market's main newsprint sites. The demands of producing a national daily newspaper are second to none – time is definitely of the essence, and the value of real time accurate information can be worth millions.



Delivery control

- View all or a subset of deliveries by timeframe, supplier, owner, mill or 'delivery pending' status. See the individual reels delivered against each consignment, and each location or warehouse bay.
- Add deliveries from EDI messages automatically or by hand using bar-scanned information.
- Accept into stock and print an acceptance report, capture extended information against the delivery such as order number and delivery note, noting any damaged goods.
- Full range of functions to edit, delete or split reels from one delivery to another.
- Trace any reel in the system, used, part used or whole back to its original delivery.

Above
Delivery input screen

Right
Warehouse Assistant running on a hand held mobile scanning device

- Instant report output by Invoice, Cost, Voyage, Reel Type, Weight and EDI information.
- Ensure accurate reporting and stock positions by reconciling actual warehouse stock with the system. Easy to use wizard-based process will guide you through the steps required to balance your books.
- ***NEW*** EDI delivery validation using the optional STRAQ Paper Warehouse Assistant system.

Reel handling and stock control

- Search for any reel in the system, easily, by the following criteria: date & timeframe, paper grammage, width, diameter, colour, type, supplier, mill source, owner, and location - and importantly the status: fully used, part used or whole.
- Locate the reel or group of reels by your criteria, and select them for a full reel-by-reel history; when it was delivered, which delivery note and invoice it was assigned to, who accepted it and into what location, what jobs the reel was used on and to how much is remaining on the reel.
- An instant on-screen stock summary, fully sortable by location, mill, width, colour and into detail by grammage, cost, and paper weight remaining.
- Printable and exportable reports on all paper type criteria, by age of stock, by reel usage status, location, source supplier and mill, whether single or multi-pack reels, formatted for ease of comprehension at a detailed or summary level.

Below
Reel number search screen

Backup & Archive

Keep your database at an optimal and nimble size by exporting old data you no longer need in your live system. Keep your data safe with the built-in operator-level backup functionality, including system-based warnings if backups have not been completed.

Monitoring & notification

Stay informed of the events that matter, even when you're off-site. Subscribe to Email and SMS Alerts that keep you up to date on specific events as they happen – focus on the key issues and manage by exception! Be notified of web breaks, waste, usage per jobs and more.



Above
An example of an event notification SMS Alert

Reel Number search

Criteria selection:

From date: 03-Sep-2007 To date: 14-Nov-2007

Supplier: All Mill: All Owner: All Location: All Diameter: All mm

Grammage: All gr/m Width: All mm Color: All IBO Paper type: All

Reel status: Full reels Part reels Used reels

Reel number (or part):

BarCode	RFTag	Gross weight	Current Weight	Date in:	Days in stock:	Paper width
1369165112161263		1216	1216	02/10/2007 14:20:30	43	1524
13691753111631263		1163	0	02/10/2007 14:20:30	43	1524
1369183412191263		1219	0	02/10/2007 11:09:43	43	1524
1369176611771263		1177	0	02/10/2007 11:09:43	43	1524
1369164812201263		1220	173	02/10/2007 11:09:43	43	1524
1369167912211263		1221	0	02/10/2007 11:09:43	43	1524
1369168012201263		1220	1220	02/10/2007 11:09:43	43	1524
1369164512171263		1217	0	02/10/2007 11:09:43	43	1524
1369183312211263		1221	0	02/10/2007 11:09:43	43	1524
1369164712191263		1219	1219	02/10/2007 11:09:43	43	1524

Reel number: [input] [Select Reel] [Close]

Jobs and print scheduling

- Enter performance statistics and timings for jobs and edition; files, plates, bundles and van times. Print order, pagination, gross and good copy.
- View and edit a graphical timeline of jobs to be printed for scheduling purposes. Manipulate the schedule using drag'n'drop to assist planning and forecasting. A single view of all jobs across all folders.
- Instant feedback on usage by reelstand, total job wastage against contract agreed wastage.
- View powerful visual representations of key operational indicators and other key data such as press uptime/downtime, temperature, humidity and vibration using the integrated Trending Display. (*Using our HTRAQ OEE System)
- Add, edit and delete job configurations with details of the publication name, publisher, target waste percentage, editions and folders on which the job is printed.
- Schedule the job to run as a one-off, contract, or contract recurring job - i.e. enter it into the system once, and all future jobs are automatically scheduled in for you.
- Capture full usage information right down to individual reelstands and folders for paper reels, part or whole usage, cross usage and damage or runability issues. Enter manually, or capture automatically using press drive or SCADA system integration.
- Enter performance statistics and timings for jobs and edition; files, plates, bundles and van times, print order, pagination, gross and good copy.

Right
A typical example of trending data



Below
Scheduled and run jobs are displayed on an interactive timeline



Integration and automation

- Total integration with STRAQ SCADA to fully automate all aspects of key data collection.
- Hosting of your Head Office system within our fast, secure, safe datacentre for centralised access.
- Installation, configuration and consultancy included. Get up and running as quickly as possible, with no costly learning curve.

Head office / groups

- Record data from, and report on paper deliveries, print jobs, paper usage, run problems, rejects and waste relating to 3rd Party print sites not yet benefiting from STRAQ Global.
- Obtain a comprehensive view of all paper-related activity across an entire organisation.
- Use the Cross-usage functionality to view detailed reports in order to ensure that accounts are settled satisfactorily, if print sites use your paper on another publisher's job!
- Benefit from accurate end of period accounts reconciliation at Head Office level for a true 'across the board' picture, including deliveries, waste and usage from 3rd party print sites – even if those sites don't use STRAQ Paper! (*) Manual input required.

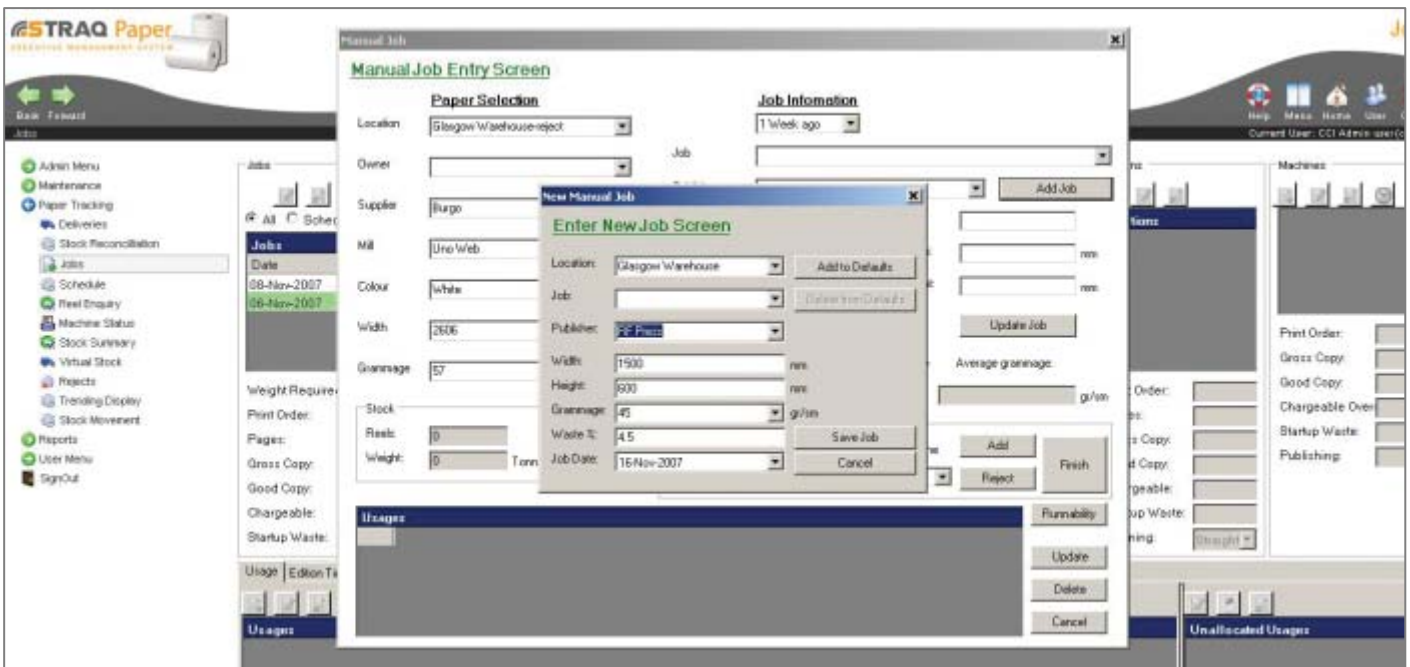


Left

RFTRAQ can host your STRAQ Global systems in our own world class datacentre

Below

STRAQ Global's comprehensive job usage entry interface



Reporting

- Job reports include Job Summaries detailing by each job, the gross number of pages, copies, target usage vs. actual usage, pre-folder and printing waste and also summarized stats such as weight and meterage, Tonnage A and B reports, with a job summary, target and actual usages, with all costs associated with the paper used in each category. Waste percentage charting, by job. Edition timings with actual performance against schedule.
- Financial reports include detailed and summary reports listing all costs associated with each job broken down into category (e.g. paper, ink, plates) for a clear view of expenditure by category.

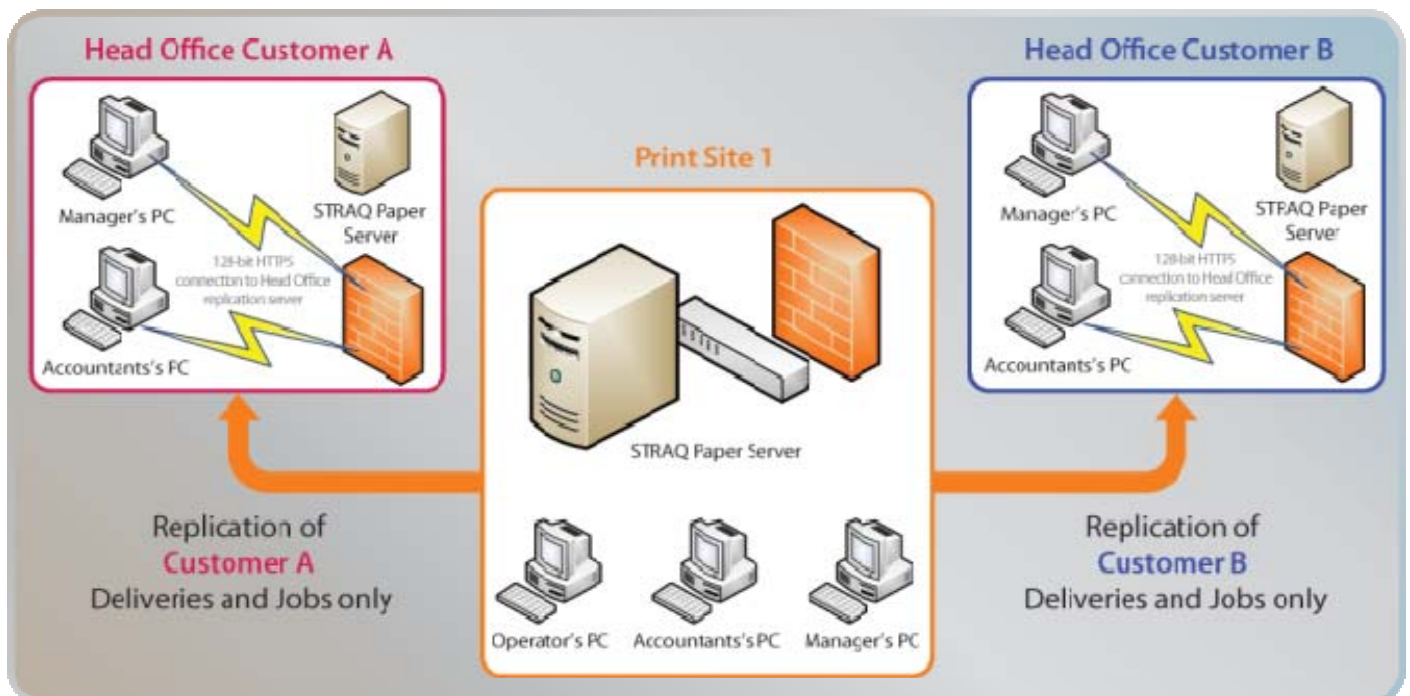


Above

STRAQ Global is capable of producing detailed reports

- Consumption reports on usage, include full detail by tonnes, reels or value, gross tonnage across all jobs within a timeframe and cross-usage where the paper of one owner has been used on another's job.
- Damage and reject reports include for reels shown as damaged on delivery, or during printing with 'damage' values. Run problem reports to show issues encountered and reason by job and folder.

Replication explained



Contact Us:



Unit 4, Cobbett Park, 22-28 Moorfield Road, Slyfield Industrial Estate, Guildford, Surrey GU1 1RU

Tel: +44 (0)845 410 3185 Fax: +44 (0)845 410 3145 www.rftraq.com

All specifications are correct at the date of publication and are subject to change at the absolute discretion of RFTRAQ to be confirmed at the time of order and delivery. Any logos or brand references used within this document, other than those of RFTRAQ Limited, are used in a purely illustrative manner and we as a company are in no way connected, endorsed or sponsored by any other company or persons referenced within this document.